

The Villages Theatres PROGRAM SCHEDULE

Friday, March 12th thru Thursday, March 18th



New This Week

Our Family Wedding (PG13)

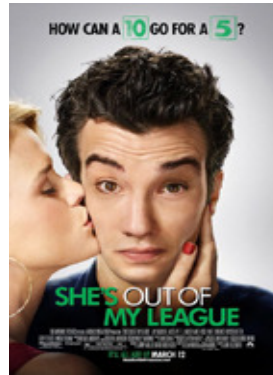
Running Time 1:50

11:10am, 1:30pm, 4:55pm, 7:10pm
Late Show Fri & Sat 9:25pm

Regina King, Forest Whitaker, America Ferrera, Hayley Marie Norman

Rated for sexual content and language.

'Our marriage, their wedding.' It's lesson number one for any newly engaged couple, Lucia and Marcus learn the hard way that the path to saying 'I do' can be rife with familial strife.



New This Week

She's Out of My League (R)

Running Time 1:55

11:20am, 2:05pm, 5:00pm, 7:15pm
Late Show Fri & Sat 9:45pm

Jay Baruchel, Alice Eve, T. J. Miller

Rated for language and sexual content.

An average Joe, can't believe his luck. Though he's stuck in a seemingly dead-end job as an airport security agent, against all odds Molly, a successful and outrageously gorgeous babe falls for him.



Brooklyn's Finest* (R)

Running Time 2:18

10:25am, 1:20pm, 4:15pm, 7:00pm
Late Show Fri & Sat 9:40

Ethan Hawke, Wesley Snipes, Richard Gere, Ellen Barkin, Don Cheadle

Rated for bloody violence, strong sexuality, nudity, drug content and language.

Brooklyn's Finest follows three Brooklyn cops who wind up at the same deadly location after experiencing vastly different career paths.



Cop Out (R)

Running Time 1:54

11:45am, 2:15pm, 4:45pm, 7:35pm
Late Show Fri & Sat 9:50pm

Bruce Willis, Tracy Morgan, Jason Lee, Kevin Pollak

Rated for language, sexual references, violence and brief sexuality.

Comedy about two cops who must deal with gangsters and laundered drug money, while tracking down a stolen baseball card and rescuing a Mexican beauty.



The Blind Side (PG13)

Running Time 2:16

10:50am, 1:35pm, 4:10pm, 6:50pm
Late Show Fri & Sat 9:35pm

Rated for violence, drug and sexual references.

Kathy Bates, Sandra Bullock

This is the remarkable true story of Michael Oher, a homeless African-American youngster from a broken home, taken in by the Touhys, a well-to-do white family who help him fulfill his potential.



Dear John (PG13)

Running Time 1:57

10:30am, 12:55pm, 4:20pm, 6:55pm
Late Show Fri & Sat 9:30pm

Rated for some sensuality and violence.

Richard Jenkins, Amanda Seyfried

Adapted from a novel written by Nicholas Sparks. John Tyree, a army officer relives every emotional moment while falling in love with Savannah, who writes him various 'Dear John' letters over the years.



Avatar (PG13)

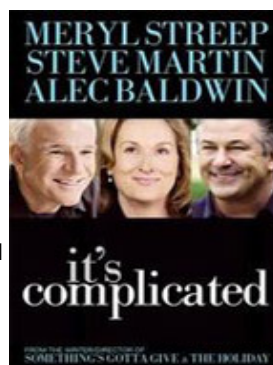
Running Time 2:53

10:40am, 2:00pm, 5:20pm
Late Show Fri & Sat 8:45pm

Rated for battle sequences and warfare, sensuality, language and smoking

Michelle Rodriguez, Sam Worthington, Zoe Saldana

AVATAR takes us to a spectacular new world beyond our imagination, where a reluctant hero embarks on a journey of redemption and discovery, as he leads a heroic battle to save a civilization.



It's Complicated (R)

Running Time 2:06

10:45am, 1:25pm, 4:05pm, 6:35pm
Late Show Fri & Sat 9:05pm

Rated for some drug content and sexuality.

Meryl Streep, Alec Baldwin, Steve Martin, Mary Kay Place

Comedy about love, divorce and everything in between.